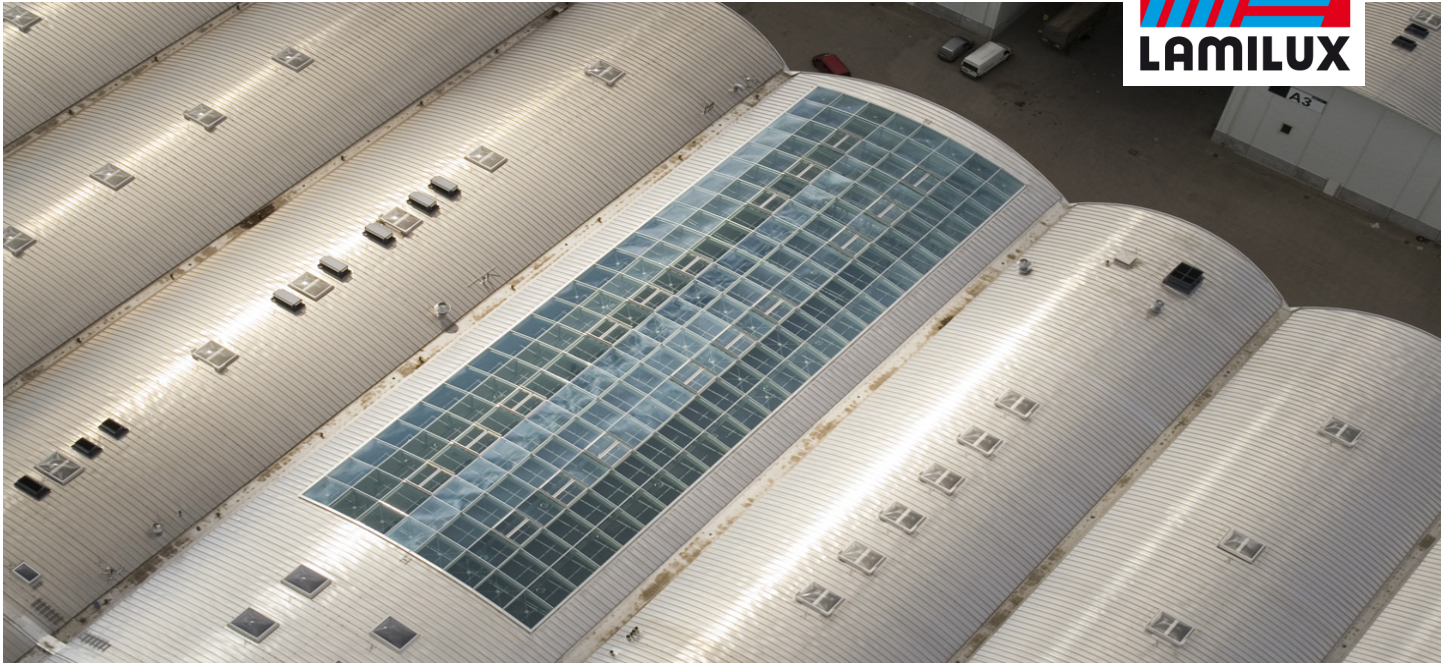


# Reference

Smoke and Heat Exhaust Ventilation



Fair Hamburg, Hamburg

## Essential info

Place / Country:	Hamburg, Germany
Year:	2007
Project:	Trade fair exhibition hall
Solutions:	SHEV systems SHEV devices Black-out blinds PPE (personal protection equipment)

SHEV systems, certified and approved according to DIN 18232, with two-stage ventilation system and installation of an adjustable black-out blind.

- Adjustable blinds do not affect the aerodynamic cross section of the SHEV systems
- SHEV systems with two-stage ventilation system: first stage with 200 mm upstroke and rain apron for adverse weather ventilation up to wind force 6, second stage with 500 mm upstroke for fair weather ventilation
- SHEV units fitted with certified LAMILUX PPE (personal protection equipment)

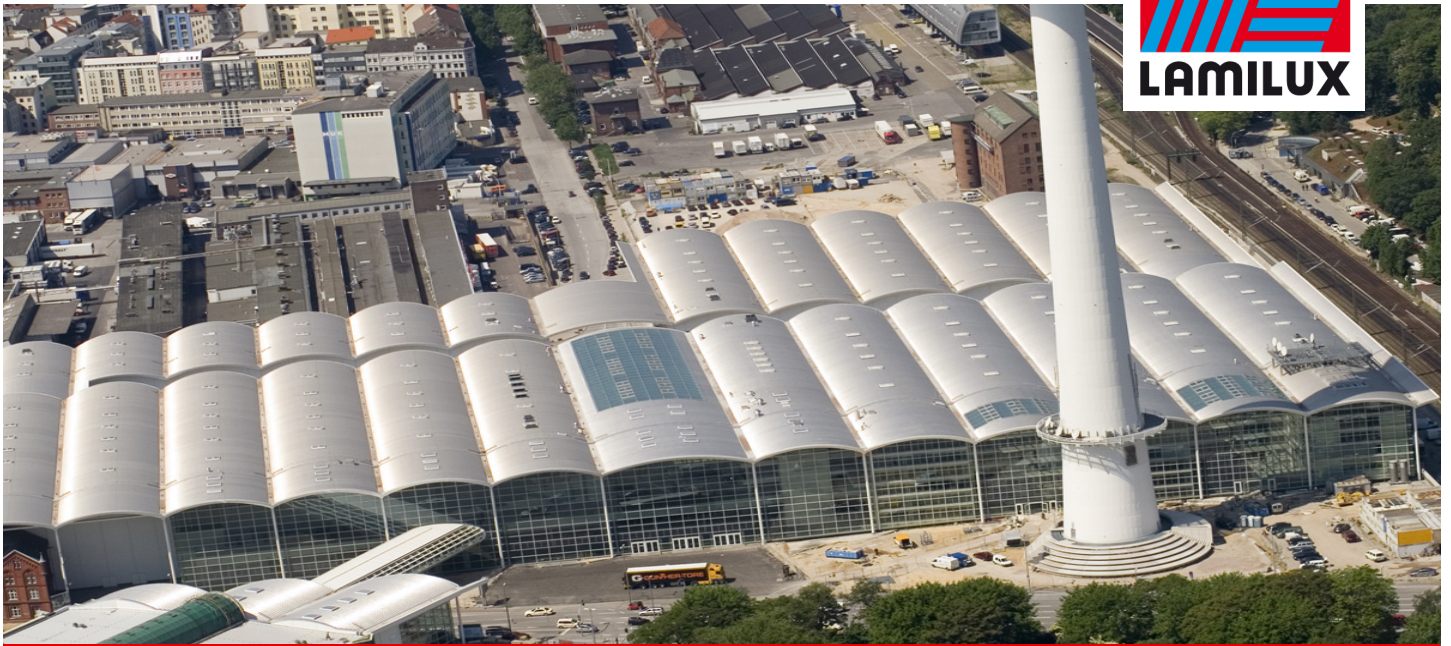
## LAMILUX HEINRICH STRUNZ GMBH

POB 1540 - 95105 Rehau/Germany - Phone: +49 (0)9283/595-0 - Fax: +49 (0)9283/595-290

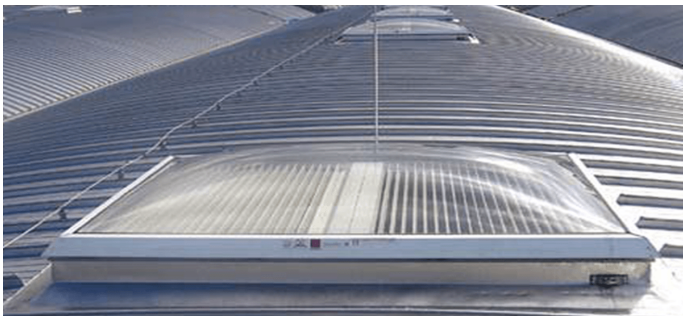
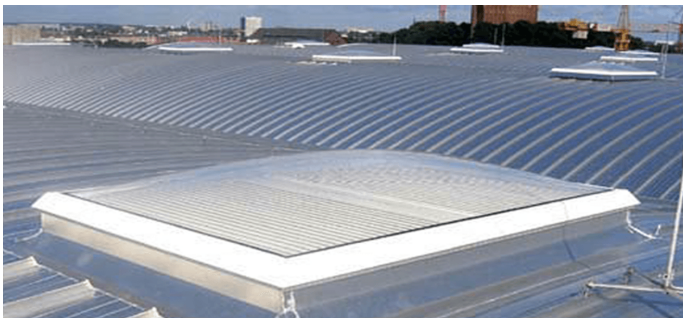
E-Mail: [information@lamilux.com](mailto:information@lamilux.com) - [www.lamilux.com](http://www.lamilux.com)

# Reference

Smoke and Heat Exhaust Ventilation



Fair Hamburg, Hamburg



**LAMILUX HEINRICH STRUNZ GMBH**

POB 1540 - 95105 Rehau/Germany - Phone: +49 (0)9283/595-0 - Fax: +49 (0)9283/595-290

E-Mail: [information@lamilux.com](mailto:information@lamilux.com) - [www.lamilux.com](http://www.lamilux.com)