



Food factory Stute, Paderborn

## Essential info

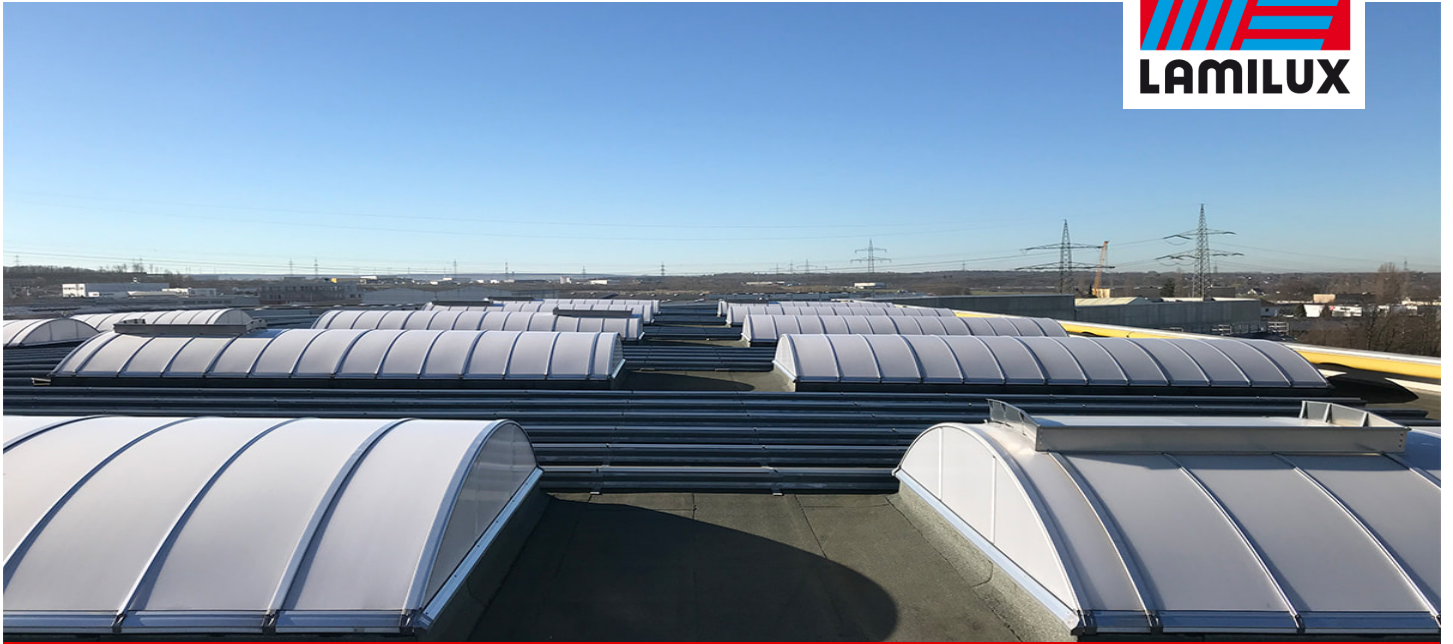
|                  |  |
|------------------|--|
| Place / Country: | Paderborn, Germany   |
| Year:            | 2018   |
| Building type:   | Industrial hall  |
| Solutions:       | LAMILUX Continuous Rooflight<br>B LAMILUX Smoke Lift<br>Continuous Rooflight B |

Complete remodelling of the elementary school with a special focus on energy efficiency to ensure sustainable building management.

- Linear daylight systems with 3° pitch, made of thermally separated, high-strength aluminium composite system with continuously foamed core composite sections and double seal system
- Laminated safety glazing with insulation glass, Ug value 1.1 W/(m²K)
- Daylight element pre-assembled on upstands made of glass-fibre-reinforced composite filled with PU foam (CFC-free)
- Daylight systems opened and closed using electric motorised openers

# Reference

CI-System Glaselement F



Food factory Stute, Paderborn



**LAMILUX HEINRICH STRUNZ GMBH**

POB 1540 - 95105 Rehau/Germany - Phone: +49 (0)9283/595-0 - Fax: +49 (0)9283/595-290

E-Mail: [information@lamilux.com](mailto:information@lamilux.com) - [www.lamilux.com](http://www.lamilux.com)